

Fossil Club of Lee County

September 2008

Message from the president

It's that
threats
fossil
fossiling
make sure
our



time of the year when hurricane and high water slows down our hunting, but there are still a lot of pursuits available. We want to the "show and tell" segment of monthly program is kept interesting so - get some specimens ready and bring them to the meeting. They don't have to be recent finds! Additionally, there are some good books that were recently published. One is "Roadside Geology of Florida" which I mentioned in our last newsletter and the other book is titled "Southern Florida's Fossil Seashells" by Carol and Bernie Peterson. Sandy will place an order for a limited quantity of each and should have them for sale at our next meeting.

We have new feature at our monthly meetings, which we call "ID the mystery fossil." Pictures of the fossil will be in the newsletter and our group will try to identify what it is. Also, as always we encourage you to bring in any fossils that want identified.

Another thing we can do in addition to sorting, cataloging, handling, and admiring our vast collections, is to "surf" the internet. One site that can lead you to hours of interesting information is Florida Fossil Sites Home page.

In August we had some **new** members join FCOLC and we welcome them. Glad to have you with us!! Also thanks to Donna and Pam for the refreshments. The September volunteer is yours truly, and I would appreciate a volunteer for October and one for November. Thanks in advance whoever you are!!! Quality Materials pit just about every Sunday, but are limited to only five persons. We had the sign-up sheets out last meeting and will do the same again this month.. We have site visit requests out to three places as of now, but no confirmations yet. As many of you know, the Peace River---one of our favorite haunts----is about 6 feet above normal and the canoes move awfully fast in only one direction.

(continued next page.....)

Next Meeting

Our next meeting will be held on Thursday, September 18 , at 7:00 p.m. at the Calusa Nature Center located at Ortiz and Colonial Blvd.

Officers

Bill Shaver, President (239)834-0694 email: billshaver-peaceriver@hotmail.com

Al Govin, Vice President 541-2845 and cell number 910-2339

Ray Seguin, Treasurer, 939-1921 or 936-5019

Leslie Stieffel, Secretary

Board Members

Louis Stieffel, 458-9818

Michael Orchin, 574-6318

Sandy Schwartz, 772-8015

Trip Director, Bill Shaver

Dive Trip Director Mike Siciliano , 980-1406

Committees

Newsletter: Cheryl Mitchell

Speakers: Bill Shaver

\$1. Raffle: Mike Siciliano

Auction: Louis Stieffel

Web Master: Curtis Klug

Presidents Report Continued

Our speaker for this month is Frank Ponzo who is by profession a motivational speaker. His presentation is about Indian artifacts, trade beads, and ancient beads. I think you'll find him interesting.

Our field trips are a bit slow right now. We are going to the Quality Materials pit just about every Sunday, but are limited to only five persons. We had the sign-up sheets out last meeting and will do the same again this month.. We have site visit requests out to three places as of now, but no confirmations yet. As many of you know, the Peace River---one of our favorite haunts-----is about 6 feet above normal and the canoes move awfully fast in only one direction.

Our officers and board of directors have been doing a lot of leg work to see if our proposed Fossil Show for Saturday, December 6th, 2008, is feasible and does the majority of the club members want to do it. It most certainly is feasible as we have tentative commitments from at least seven outside vendors at this time. We will need some more volunteers to ensure that we have sufficient people for the various jobs that will need to be done on show day (i.e.: table monitors, providing information to visitors, gophers, admissions/cashier, and general work).

My personal feeling is that we will have a lot fun, it will be interesting, and we will make money for good causes. Also, it's a great event for parents looking for something worthwhile to do with their school age children.

I look forward to seeing everyone at our September meeting. Also, *we will have a surprise event.*



The head of the woolly mammoth excavated from the Siberian Tundra

Dual Citizenship for Woolly Mammoth

By HENRY FOUNTAIN

Published: September 4, 2008

Submitted by Louis Steiffel

New York Times, Science

It is common to think of the land bridge that existed from time to time across what is now the Bering Strait as a one-way affair. After all, the route through the area known as Beringia is thought to be how many animals and humans made their way out of Asia and into North America.

But there were no "Eastbound Only" signs. Some animals — camel ancestors, for example — went the other way, from North America into Asia. And there is no reason that a species could not go both ways, if conditions were right. That appears to be the case with the woolly mammoth, according to a major phylogenetic analysis.

Hendrik Poinar of McMaster University in Hamilton, Ontario, and colleagues looked at mitochondrial DNA from 160 mammoth samples from across Eurasia and North America as a way of determining who was related to whom. They identified several groups, or clades — some endemic to Siberia and other parts of Asia and others to North America, having been separated after mammoths first migrated eastward more than 1.5 million years ago.

But as they report in *Current Biology*, the researchers found that at some point in the last 150,000 years, North American mammoths migrated back to Siberia. "When they're coming back in, the endemic Siberian populations start to crash," Dr. Poinar said, and by about 40,000 years ago, the North American mammoths had completely taken over.

Whether the Siberian mammoths died out on their own (because of what is called genetic drift) or were outcompeted and outfoxed by their North American relatives is not known, though Dr. Poinar suspects it is not coincidental that the Siberian animals began to die out when North American animals started arriving.

Either way, the mammoths that finally became extinct about 10,000 years ago were not of Siberian lineage. "I'm not sure the Russians would be happy that their iconic woolly mammoth has North American origins," Dr. Poinar said.

Minutes

Coming Events

MINUTES OF MEETING OF FOSSIL CLUB OF LEE COUNTY

A meeting of the membership of the Fossil Club of Lee County was held at the time, date and place set forth below:

DATE OF MEETING: August 21, 2008

MEETING TIME: 7:00 P.M.

MEETING PLACE: Calusa Nature Center

Number in attendance: 31

Club President Bill Shaver presiding.

Bill welcomed new members and thanked Pam Plummer & Donna Johnson for the great refreshments.

Speaker: Club member Charles O'Connor gave a very informative presentation on megalodon sharks, including their biology, evolution and their huge teeth.

Bill thanked webmaster Curtis Klug for updating the club website.

Possible field trips: CF Industries; September 20th has been requested. Possible trip to Vulcan Mine.

Our upcoming fossil show was discussed. There will be a board meeting at Sandy's house to further discuss the show.

September Speaker is Frank Ponzo of Briar Creek Trading Company. October speaker is Phil Briskin of Sanibel Shellers

January or February / Louis Stieffel

September Refreshments: Bill Shaver

For Show & Tell, Louis Stieffel showed a variety of sharks teeth. Günter showed his ecphora & other shells.

Dollar raffle and door prize drawing were held.

By: Leslie Stieffel, Secretary

2008 Florida Fossil Hunters present the 17th Annual Fossil, Mineral, and Gem Show

Where: *Central Florida Fairgrounds*

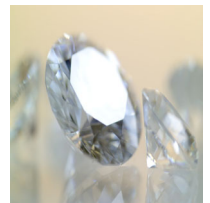
Dates and Time: Saturday, October 11, 2008: 9:00 am — 5:00 pm; October 12, 2008: 10:00 am — 4:00 pm

\$4.00 Adults | \$1.00 Children

For more information on the 2008 Fossil Fair contact us at:

FossilFair@floridafossilhunters.com

More information and directions as we get closer in time.



Refreshments

September - Bill Shaver

October - Need Volunteer(s)

November - Need Volunteer



**Another great story from our member
Dave Flinchaugh by request of Cheryl
Mitchell.**

As requested, I am sending you information on shark tooth donations I made to my niece for her class. Susan teaches a group of seven learning disabled and some problem children in suburban Philadelphia, PA. I made up 7 packages along with a teacher package with good samples of all types of shark teeth from Megs to Dusksies. The kids had never seen or heard of fossilized teeth and she felt this would broaden their limited horizons.

According to Susan, it was a big success. So successful that when one of the kids brought their package home their mother called to make sure the student had not stolen the material!!! Please find enclosed the thank you note I received from the class along with a picture of the students and the other two teachers and aids in the class. (Cheryl will bring to the fossil meeting). As you know I am always giving good teeth to my needy and whiney friends.
Dave Flinchbaugh

**From the Speaker of the Month: Frank
Ponzo**

My talk is entitled "How to become a fossil finding magnet" this talk will be a 20 min. talk exposing the secret to finding what ever your heart desires" You have to see it, and believe it, to achieve it. This talk will include motivational principals that can help you actually find more fossils in the next year then you have in the past. For my show and tell part of the talk I will be showing Indian artifacts and old and ancient beads. Members are encouraged to bring Indian artifacts and beads for discussion. I will bring some authentic Indian arrowheads and old beads for sale. Please let me know in advance if you have an artifact that you have found and would like info on it. Send pictures to frankponzo@comcast.net. 941-914-0596

IONA HOUSE HISTORY

The Iona House, now located on the grounds of the Calusa Nature Center, was built in 1909 and served as the first one-room schoolhouse in the Iona farming community of Fort Myers. In the mid-1950s, the pine schoolhouse was moved from the Iona Community to the corner of Cleveland (US41) and Colonial in Fort Myers where it became a drive-in non-denominational church led by a Presbyterian Minister. In 1977, the Iona House was being considered for razing to make way for roadway expansion. The building was rescued by Dr. Alfred Kennan and his wife Virginia as they purchased the building and offered it to the Calusa Nature Center and Planetarium. With help of Junior League funding and efforts led by Dr. Robin Brown (one of the Fossil Club of Lee County founders and still an active member today), the Iona House was moved to its present location on the CNC grounds and underwent renovations. According to some of those who remember the event the, actual transport and movement of the building was quite a sight.

Over the years, the Iona House has served as a meeting place for several organizations including the Society of Friends (Quakers), Southwest Florida Water Management District, School District of Lee County, Nature Conservancy, Audubon Society, and The Fossil Club of Lee County.

(This article was submitted by Scott Gregory, Resource Naturalist, CNC, and edited by Bill Shaver)

Pat Oakes submitted an email from her girlfriend's sister and husband (Ralph and Mary Timmerman) who have been kayaking in Nova Scotia and visiting the Parc national de Miguasha in Quebec, Canada. This couple had no previous experience fossilizing, but as a result of this trip they are now very interested. I will bring this lengthy email to this month's meeting for the members to read. Cheryl

Mystery Fossil

I hope all of our newer members will attempt to identify the mystery fossil of the month. This is the way to learn what can be found. You might want to get a copy of **Vertebrate Fossils: A Neophytes's Guide** by Frank Kocsis Jr. The club offers this great book for sale at about \$1. above our cost. It is a great resource to helping you identify things when you find them. If that doesn't work, you can check with a long time member who can help you.

This month's mystery fossils are not very large, they might easily be discarded but they are bone and found in rivers and pits. So if you don't know what it is and you think it is bone, save it to get identified later. If it is junk, you can throw it away then.



These fossils were provided by Louis Stiefel. They will be at our meeting on September 18th. Pick them up and examine them.

Augusts' Mystery Fossil

Last month's mystery fossil was a **glyptodont edge scute or osteoderm**. These are moveable bands of a bony body shield of a glyptotherium sp. On page 40 of the Kocsis book (upper left corner), you will see a body scute that is very distinctive with an, almost, floral pattern. The edge scutes are a little harder to identify. This edge scute had a protuberance that made it look similar to a tortoise spur, but the coarseness and porosity of the thicker edge is similar to glyptodont material. Be sure and pick it up and feel it, maybe you will recognize one when you find it.

In the **Mammalia Xenarthrans** family, there are three major evolutionary lineages: the shelled Cingulata, the anteaters and the sloths.

In the Mammalia Xenarthran Cingulata family (shelled) there are three species; Dasypodidae, Pamphathiidae, and Glyptodontidae. They all appeared in the late Pliocene when the first important wave of animals came from South America. All three families became extinct in N.A. at the end of the Pleistocene. In S.A., all are extinct except the Dasypodidae.

New Members

Frederic Briskin w/Louise, Maureen and Gregory

Dean Hart

Fadra Hernandez

Doug Linz

Fred Mazza